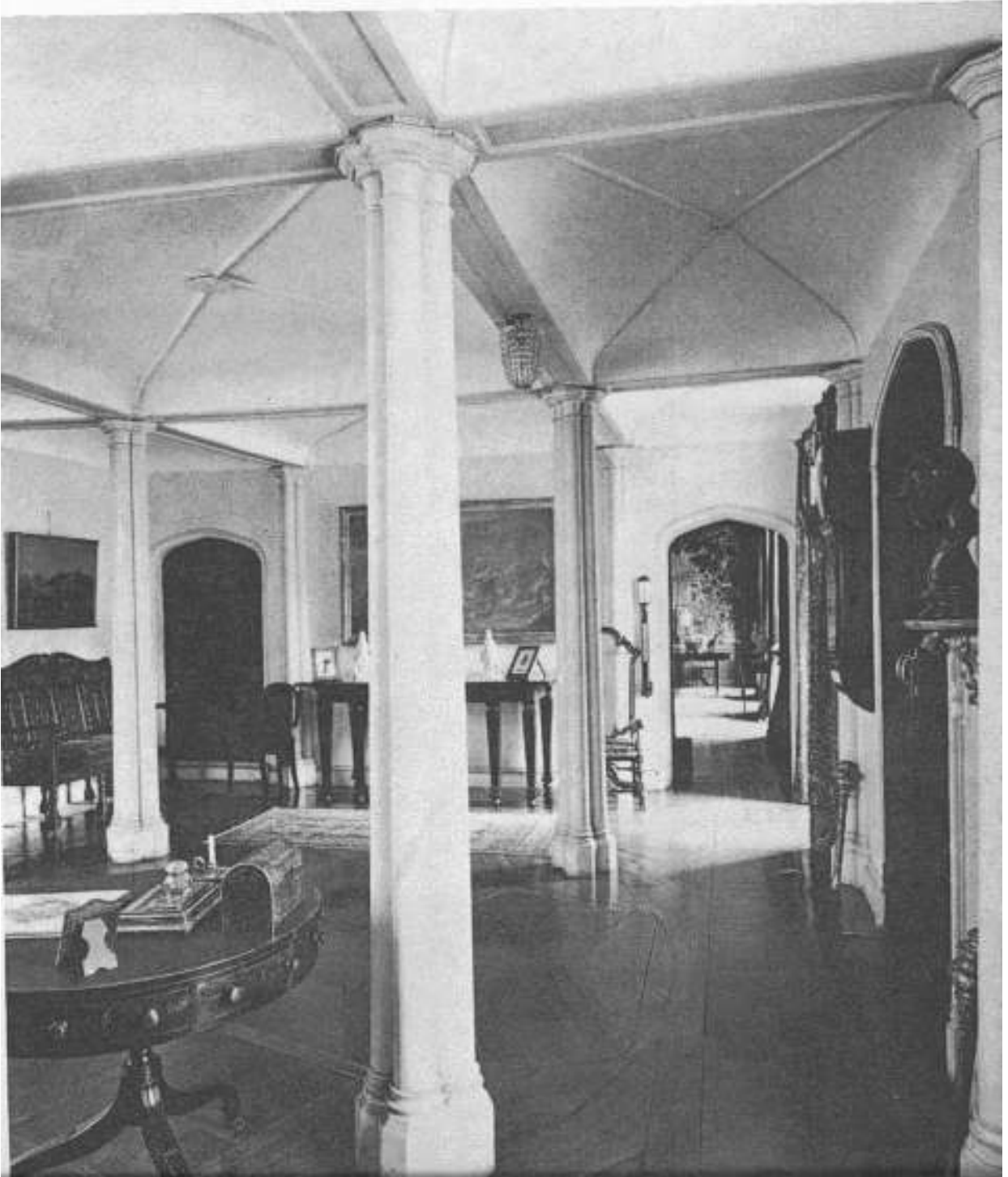




Boughton Monchelsea Place, Kent.



Interior of Boughton Monchelsea Place, showing side table.



Mahogany library table. English, mid-18<sup>th</sup> Century.

Provenance:- Wanstead House, Essex, sold at the Wanstead sale, 11<sup>th</sup> June 1822, lot 33; subsequently, George Widener; sold Christie's New York, *English Furniture*, 22<sup>nd</sup> October 1988, lot 144 (\$165,000), bought by R. A. Lee; The Hon. Simon Sainsbury.

This table has paired upright legs with scrolled top beneath keyed-out sections of the frieze, all similar to the single legs of the present table.



One of a pair of painted and parcel-gilt side tables with slate tops. English, c. 1740.  
*H. 32¼" (82cm). W. 72" (1,83m).*

Sotheby's, *Much Hadham Hall*, 30<sup>th</sup> Sept.-1<sup>st</sup> Oct. 1980, lot 667.

These tables are of the same scale and form as the present table, and the form of the legs is particularly similar.

- 497 A thermometer and barometer in mahogany upright case, by Dicey, New Bond Street

THE DINING ROOM.

- 498 Four pairs of black satin flowered damask curtains
- 499 An Indian bordered carpet, *centre flowered in panels on a crimson ground, yellow ground diaper border*, about 24ft. by 16ft.
- 500 An iron stove with serpentine front
- 501 A 4ft. 6in. steel fender, a pair of wrought iron and copper-mounted fire dogs, 3 steel fire implements, and a steel plate stand on cabriole legs
- 502 A 3ft. 2in. oak circular folding top table
- 503 An oak sideboard, carved edge and centre with acanthus foliage, on scroll legs and feet, brass rail back with chased pillar supports, 8ft. 4in. wide
- 504 An oak sarcophagus shaped cellarette, 2ft. 10in. wide
- 505 A HEPPLEWHITE MAHOGANY SETTEE WITH SERPENTINE SHAPED BACK AND SCROLL ENDS, with carved rope edge, on 8 cabriole legs, the shoulders carved in honeysuckle and husk pendants, on ball shaped feet, with original roll castors, upholstered in crimson silk damask, loose cushion seat and 3 cushions, 7ft. 3in. wide
- 136gu. 506 A SET OF EIGHT (6 AND 2 ARM) HEPPLEWHITE MAHOGANY DINING CHAIRS, *similarly carved*, seats and backs covered in morocco *at per chair*
- 108gu. } 507 A 5ft. 10in. ADAMS MAHOGANY CARVING TABLE, the frieze to front and ends with carved flutings and cartouches, on 6 legs
- 508 THE COMPANION CARVING TABLE *Partridge*
- 509 A 22in. oak fire screen with sliding panels, covered in woven tapestry
- 510 A rosewood pole fire screen on circular base, and scroll shaped panel

THE BILLIARD ROOM.

- 511 A 9ft. 6in. mahogany break-front open bookcase, with cupboards under enclosed by 6 doors
- 512 A set of 4 old English walnut chairs with oval backs, the tops carved in flowers, on cabriole legs and scroll feet, upholstered in morocco leather *at per chair*

Lots 507 and 508 in the Yotes Court sale. From this annotated page in the catalogue, these lots appear to have been sold together (for 108 guineas, to Partridge). The size and the description match the present table and it is possible to imagine that Col. Winch of Boughton Monchelsea Place, who bought forty lots in this sale, might have wanted only one of these tables and could well have bought one from Partridge after the auction.

BY DIRECTION OF THE RIGHT HONOURABLE VISCOUNTESS TORRINGTON  
As Trustees for Life under a Settlement of THE YOTES COURT ESTATE and Pursuant  
to an Order of the Court.

# YOTES COURT, MEREWORTH

## Near MAIDSTONE

Within seven and a half miles of Maidstone, and within two and a half miles from  
Wateringbury Station. Motor Buses run from Maidstone to Mereworth.

### A CATALOGUE OF THE CONTENTS OF THE MANSION

COMPRISING :

#### Early 18th Century English FURNITURE

Including a William and Mary Marqueterie Cabinet, a Sheraton Satinwood Dwarf  
Bookcase, Chippendale and Adams Carved Mirrors, Queen Anne Marqueterie Com-  
mode, Cabinet and Chest of Drawers, a Small Queen Anne Walnut Bureau Bookcase,  
a Regency Parqueterie Commode, Chippendale Mahogany Tables, a Set of 16 Georgian  
Mahogany Hall Chairs, a Hepplewhite Settee and 8 Chairs, a Pair of Adams Mahogany  
Carving Tables.

#### Louis XV & Louis XVI Marqueterie Furniture

Including a Kingwood Writing Table, Rosewood and Tulipwood Commodes, a Pair  
of Envoigneurs, Carved and Gilt Fauteuils, Parqueterie and Marqueterie Commodes, etc.

#### CHINESE, OLD ENGLISH & CONTINENTAL PORCELAIN, BOOKS

Including First Editions of Dickens' Works with Autograph Letter from Charles  
Dickens bound in "The Mystery of Edwin Drood."

BRACKET, CHIMING AND OTHER CLOCKS, CUT GLASS, MINIATURES  
AND CABINET OBJECTS.

#### A Collection of Old English Portraits

Ascribed to Sir Godfrey Kneller, Sir Peter Lely, Ossian Humphry, G. B. Cipriani,  
J. Highmore, and others.

AN EARLY CHINESE WATER COLOUR DRAWING, WATER COLOUR  
DRAWINGS, ENGRAVINGS, ETC., HOUSEHOLD LINEN.

PERSIAN, AUBUSSON, AXMINSTER, WILTON AND OTHER CARPETS.  
The Contents of the Servants' Bedrooms and Domestic Offices, and a few Outdoor  
Effects.

WHICH WILL BE SOLD BY AUCTION ON THE TERMS AS ABOVE, BY

## MESSRS. FOSTER

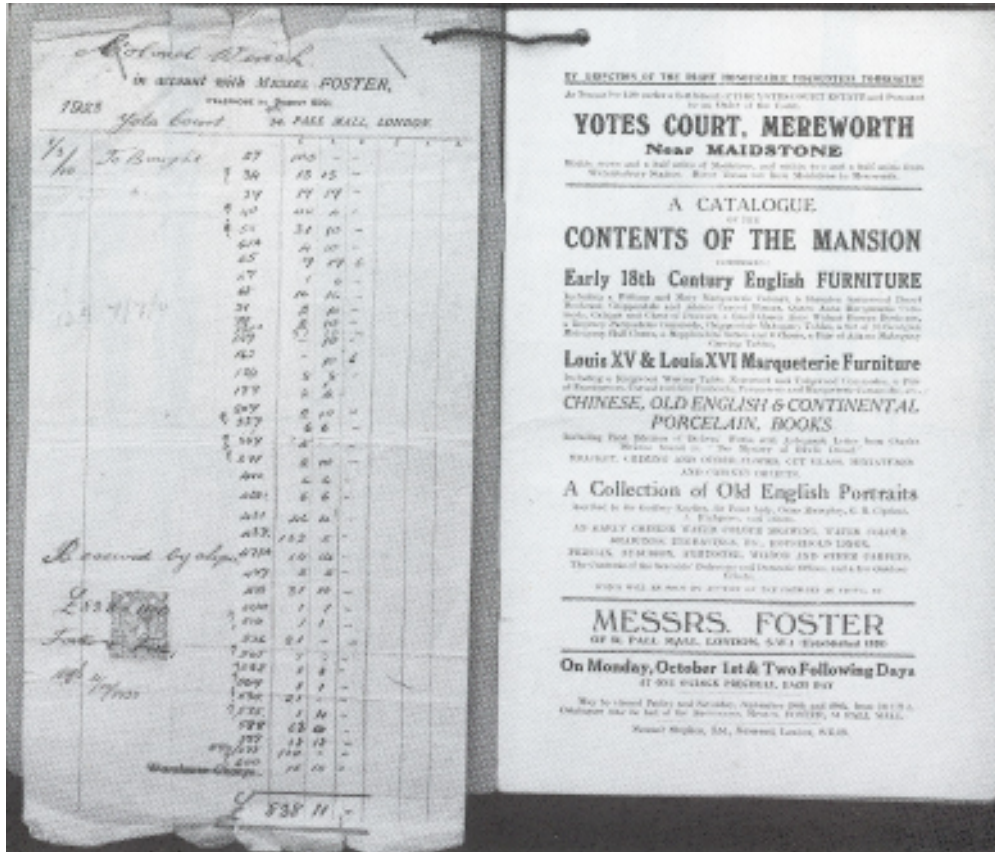
OF 54, PALL MALL, LONDON, S.W.1 (Established 1810)

On Monday, October 1st & Two Following Days  
AT ONE O'CLOCK PRECISELY, EACH DAY

May be viewed Friday and Saturday, September 28th and 29th, from 10 till 5.  
Catalogues may be had of the Auctioneers, Messrs. FOSTER, 54 PALL MALL.

Samuel Stephen, Ltd., Norwood, London, S.E.19.

1923



The copy of Col. Winch's Yotes Court auction catalogue, October 1st-3rd, 1923, with the invoice for his purchases at the sale.



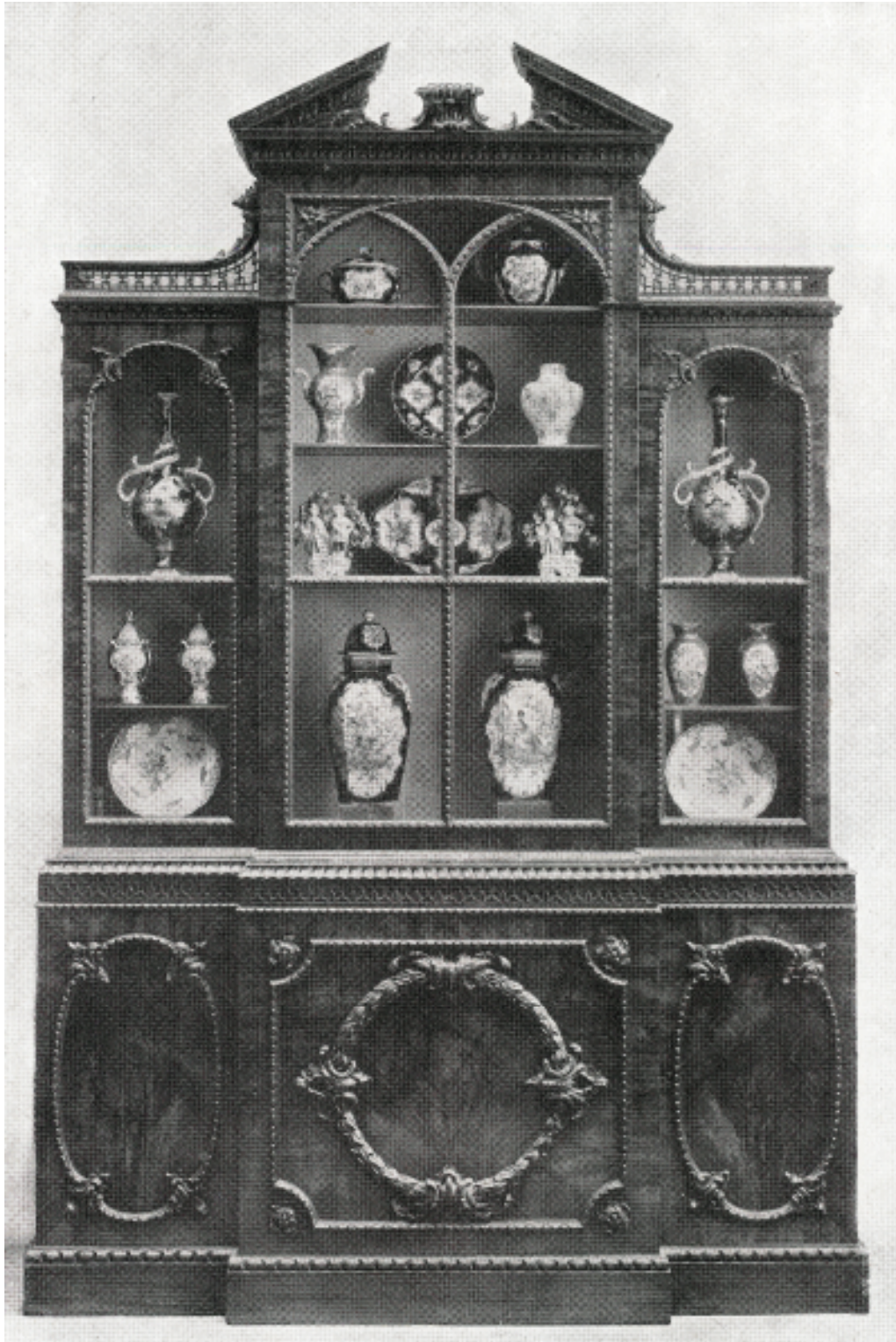
One of a pair of mahogany side tables with marble tops.  
English, c. 1765. *H.* 33". *W.* 73". *D.* 31".

Huntingdon Art Gallery, San Marino, California.

The form of the legs and feet of these tables are markedly  
similar to those of the present table.

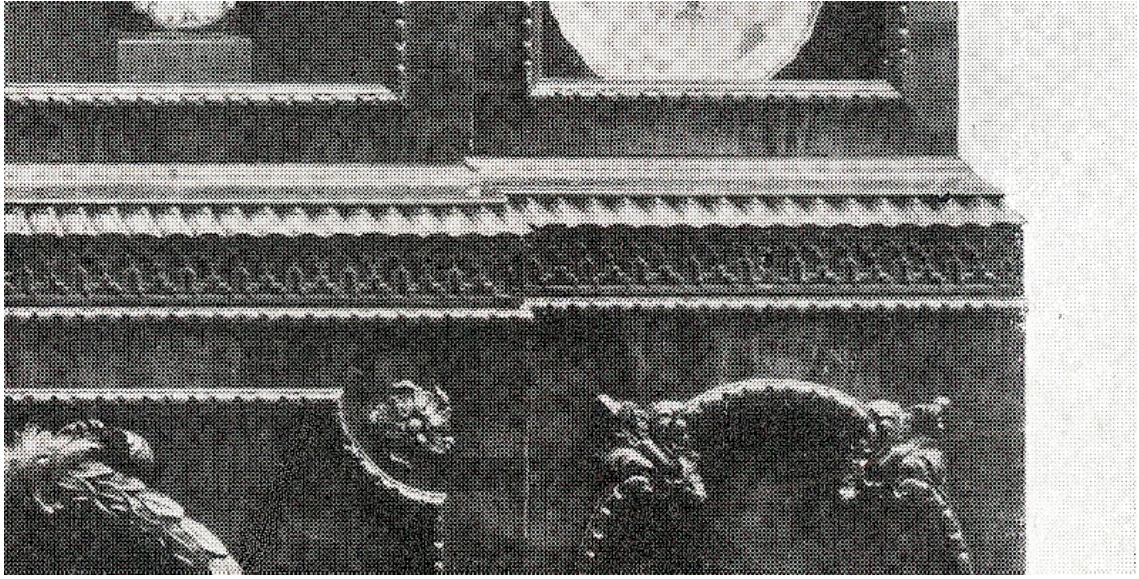
From Robert R. Wark, *The Huntingdon Art Collection*, 1970, no. 121, p. 81.





Bookcase attributed to William Vile. From the collection of Sir James Caird.

Ralph Edwards and Margaret Jourdain, *Georgian Cabinet-Makers*,  
Rev. Ed., 1955, fig. 59, p. 150.



Detail of bookcase attributed to William Vile, showing similar carving to the frieze as on the present side table.



Carved painted and parcel-gilt side table from the collection of the Earl of Chichester at Stanmer House, Brighton and now in the Brighton Art Gallery. English, c. 1755.

From Clifford Musgrave, *Adam and Hepplewhite and other Neo-Classical Furniture*, 1966, no. 13.



The Hall, Newby Hall, Yorkshire, showing a six-legged table with marble top, of similar form and scale to the present table, though with the back legs reversed. Like the present table, the legs are of a particularly upright form and the frieze is keyed out.

From Eileen Harris, *The Genius of Robert Adam, His Interiors*, 2001, fig. 340, p. 226.